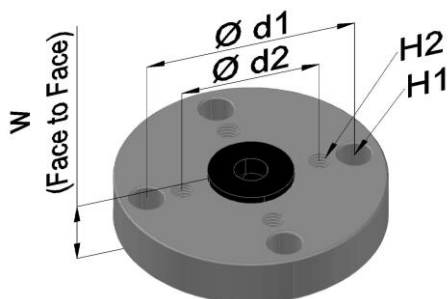
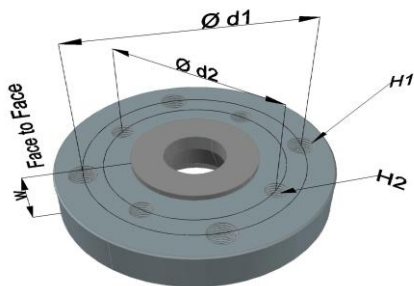


LINED FLANGE REDUCERS #150

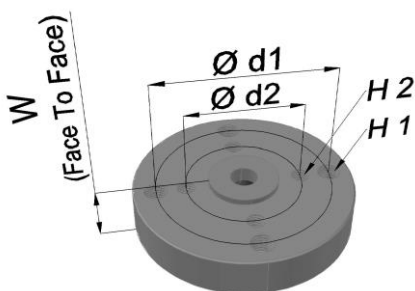
TYPE 1



TYPE 2



TYPE 3



Picture for illustration only, type of steel fabrication varies

NB 1	NB 2	D mm	W mm	d1 mm	H1	d2 mm	H2	Ty	Wt kg
¾"	½"	98	35	69.8	4x½"	60.3	4x½"	2	1.9
1"	½"	108	35	79.4	4x½"	60.3	4x½"	2	2.1
1"	¾"	108	35	79.4	4x½"	69.8	4x½"	2	2.0
1½"	½"	127	35	98.4	4x½"	60.3	4x½"	3	4.1
1½"	¾"	127	35	98.4	4x½"	69.8	4x½"	3	4.0
1½"	1"	127	35	98.4	4x½"	79.4	4x½"	2	3.9
2"	½"	152	35	120.6	4x5/8"	60.3	4x½"	3	4.8
2"	¾"	152	35	120.6	4x5/8"	69.8	4x½"	3	4.8
2"	1"	152	35	120.6	4x5/8"	79.4	4x½"	3	4.7
2"	1½"	152	35	120.6	4x5/8"	98.4	4x½"	2	4.5
3"	½"	190	35	152.4	4x19mm	60.3	4x½"	1	6.7
3"	¾"	190	35	152.4	4x19mm	69.8	4x½"	1	6.6
3"	1"	190	35	152.4	4x19mm	79.4	4x½"	1	6.5
3"	1½"	190	35	152.4	4x5/8"	98.4	4x½"	3	6.2
3"	2"	190	35	152.4	4x5/8"	120.6	4x5/8"	2	6.0
4"	¾"	229	45	190.9	8x19mm	60.3	4x½"	1	11
4"	1"	229	45	190.9	8x19mm	69.8	4x½"	1	20
4"	1½"	229	45	190.9	8x19mm	79.4	4x½"	1	11
4"	2"	229	45	190.9	8x19mm	98.4	4x½"	1	11
4"	3"	229	45	190.9	8x5/8"	120.6	4x5/8"	3	10
6"	1"	279	45	241.3	8x22mm	79.4	4x½"	1	17
6"	1½"	279	45	241.3	8x22mm	98.4	4x½"	1	17
6"	2"	279	45	241.3	8x22mm	120.6	4x5/8"	1	17
6"	3"	279	45	241.3	8x¾"	152.4	4x5/8"	3	16
6"	4"	279	45	241.3	8x¾"	190.5	8x5/8"	2	15
8"	1"	343	45	298.4	8x22mm	79.4	4x½"	1	25
8"	1½"	343	45	298.4	8x22mm	98.4	4x½"	1	25
8"	2"	343	45	298.4	8x22mm	120.6	4x5/8"	1	25
8"	3"	343	45	298.4	8x22mm	152.4	4x5/8"	1	24
8"	4"	343	45	298.4	8x22mm	190.5	8x5/8"	1	23
8"	6"	343	45	298.4	8x¾"	241.3	8x¾"	3	20
10"	1½"	406	45	362.0	12x25.5mm	98.4	4x½"	1	34
10"	2"	406	45	362.0	12x25.5mm	120.6	4x½"	1	34
10"	3"	406	45	362.0	12x25.5mm	152.4	4x½"	1	33
10"	4"	406	45	362.0	12x25.5mm	190.5	8x5/8"	1	33
10"	6"	406	45	362.0	12x25.5mm	241.3	8x¾"	1	30
10"	8"	406	45	362.0	12x7/8"	298.4	8x¾"	3	27
12"	2"	483	50	431.8	12x25.5mm	120.6	4x½"	1	55
12"	3"	483	50	431.8	12x25.5mm	152.4	4x½"	1	54
12"	4"	483	50	431.8	12x25.5mm	190.5	8x5/8"	1	54
12"	6"	483	50	431.8	12x25.5mm	241.3	8x¾"	1	49
12"	8"	483	50	431.8	12x25.5mm	298.4	8x¾"	1	44
12"	10"	483	50	431.8	12x7/8"	361.9	12x7/8"	3	43